

IMPACT PRO

PRESENTATION POINTER



Ba11



User Manual

Designed For Excellence.

www.iball.co.in

Thank you for choosing **IMPACT PRO**. Please read the user manual carefully before operation and save this user manual for further reference.

Note :

- *Please do not attempt to disassemble this product yourself, as it will result in voiding the warranty. For expert assistance, please contact our support team at 84400 45005 or feedback@iball.co.in*

To review our complete warranty terms and conditions, please click the link below

[**View Warranty Policy**](#)

To find your nearest authorized service center, please click the link below

[**Find a Service Center**](#)

Features :

- 2.4GHz Wireless Control
- 100m LASER Throw
- Cross Platform Support
- 50m Wireless Range
- Ultra Bright Green LASER
- Type-C Recharge
- Battery Level Display
- Media | Page Controls
- Status LED
- USB Receiver

Specification :

Connectivity	: USB Receiver (2.4GHz)
LASER Emitter Class	: Class 3R
LASER Color	: Green
Wavelength	: 532 nm
No. of Buttons	: 6
Input Power	: DC 5V=1A
Charging Time	: 2.5h
Max. Output Power	: <5mW
Product Dimension	: 2.3 x 1.5 x 13.5 cm (W x D x H)
Net Weight	: 30g

Package Contents :

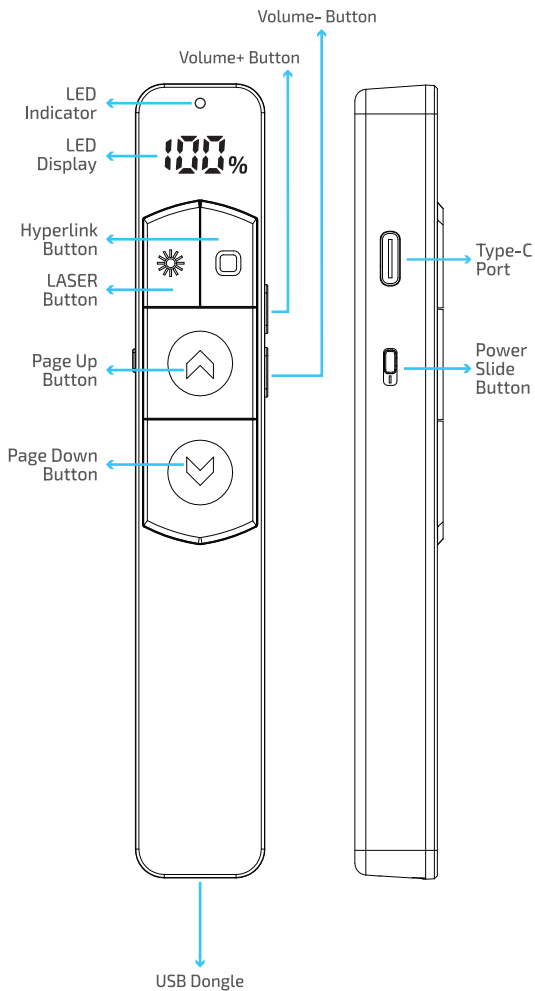
Presentation Pointer : 1 U

USB Receiver : 1 U

Type-C Cable : 1 U

QR Code Guide : 1 U

Product Description :



Button Functions :

Button	Function
LASER	Press and hold to enable/disable LASER point.
Page Up	Press the button to slide page up.
Page Down	Press the button to slide page down.
Volume+	Press to increase the volume. Press and hold to switch windows.
Volume-	Press to decrease the volume.
Hyperlink	Press and hold to switch window. Press to select hyperlink. Press two times to open the hyperlink.

Instruction for Use :

Insert the USB Dongle into the computer with USB, Open the PPT/Keynote/PDF file at same time, OK, to start the demonstration. The LED Indicator flashes green whenever a function is performed.

Note: The Mac system only supports page up and page down functions in Keynote software.

Charging Instruction :

Connect the device to a 5V 1A DC adapter through Type-C port. Battery level is displayed on the LED Display. Red LED glows in the LED indicator constantly while charging and turns off once the device is charged fully.



ISO 9001:2015 Certified Company
Since 2001 | www.iball.co.in