

# **TONIX 77A**

LASER TONER CARTRIDGE



Ba11



## **User Manual**

*Designed For Excellence.*

[www.iball.co.in](http://www.iball.co.in)

Thank you for choosing **TONIX 77A**. Please read the user manual carefully before operation and save this user manual for further reference.

**Caution :**

- Always keep the cartridge and box upright.
- Store in a dry place with temperature below 40<sup>o</sup>c, avoid direct sunlight.
- Install the cartridge immediately after removing from packaging, do not touch the roller drum.
- Be careful with the toner powder. Please consult with a doctor in case of direct exposure with skin or eyes.
- Any sudden change in humidity or temperature might affect the performance of the toner cartridge.
- Recycle the empty cartridges responsibly, return back to the cartridge vendor.
- Keep away from children.
- Please do not attempt to disassemble this product yourself, as it will result in voiding the warranty. For expert assistance, please contact our support team at 84400 45005 or [feedback@iball.co.in](mailto:feedback@iball.co.in)

 **Do not dispose in fire**

## Features :

- Upto 3800 Page Yield
- With Chip
- Sharp & Clear Printing
- High-Quality Toner Formula
- Smear-Free Prints
- Rich Dark Black Output
- Environmental Friendly

## Specification :

Total Page Yield : 3800 Pages/Cartridge

Compatible Printers : H LJ Pro  
M304a/M305d/  
M305dn/M404d/  
M404n/M404dn/  
M404dw/M405n/  
M405dn/M405dw/  
M405d  
HP LJ Pro MFPM329dw/  
M329dn/M429dw/  
M429fdn/M429fdw  
HP LaserJet Enterprise  
MFP M431f  
HP LaserJet Enterprise  
M407dn

Cartridge Color : Black

Operating

Temperature Range : 10~30°C

Storage

Temperature Range	: 10~30°C
Operating Humidity Range	: 20~80%
Non-Operating Humidity Range	: More than 80%
Noise level	: 30~40 dB
Product Dimension	: 27.5 x 14.5 x 7.5 cm (W x D x H)
Net.Weight	: 730 g

**Package Contents :**

Cartridge	: 1 U
QR Code Guide	: 1 U

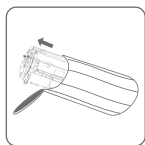
*All brand names, logos and registered trademarks mentioned are property of their respective owners. The model nos mentioned here are only for reference and to show compatibility, the products is not affiliated by any other manufacturer. The product image and illustrations shown are only for reference, actual product may vary.*

## Instructions for replacing the cartridge :



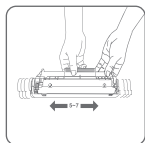
### Step 1 :

Turn off the printer and remove the old cartridge as show in the image.



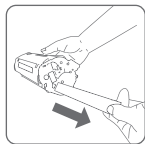
### Step 2 :

Remove the new toner cartridge from the packaging and remove the black protection film.



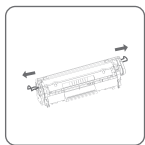
### Step 3 :

Shake the cartridge few times as shown in the image.



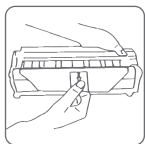
### Step 4 :

Carefully remove the sealing tape from the cartridge.



### Step 5 :

If there are protective orange separates on the cartridge, then please remove it as shown in image.



### Step 6 :

If there is protective insulation paper on the cartridge then please remove it as show in the image.



### Step 7 :

Insert the cartridge into the printer and close the printer lid.

*Please note that step 4,5 and 6 may not applicable for all models.*

This Laser Cartridge is suitable for use in the printers listed on it's packaging. Please read this Instruction Manual before use.

### Usage :

#### 1. Media Requirement :

Select appropriate media for printing. Do not use stapled paper, damaged or thick paper as it can damage the OPC and lead to poor print quality.

#### 2. Environment Requirement :

Optimum temperature and humidity for laser toner cartridge is 10°C - 40°C & 20 - 80% respectively. If the temperature and humidity conditions are higher or lower, then please put the printer and cartridge under recommended

temperature and humidity for around 2H before installation or it may affect the print quality.

3. Move the OPC gears 360° in its proper direction. Rolling OPC in the incorrect direction will make the toner leak.

4. During the initial print process, the print quality might be pale and not proper. The printer will perform optimally after 10 continuous prints.

5. After a low toner warning message the printer might continue to work for 40-50 more pages but print quality might be pale.

**To review our complete warranty terms and conditions, please click the link below**

[\*\*\*View Warranty Policy\*\*\*](#)

**To find your nearest authorized service center, please click the link below**

[\*\*\*Find a Service Center\*\*\*](#)



ISO 9001:2015 Certified Company  
Since 2001 | [www.iball.co.in](http://www.iball.co.in)